



Quality Gas and Electric Fires



Smart phone scanner

Tribute balanced flue



Ekos

Ekos 20" with coal fuel bed and Harmony firebox fascia in a black/brushed brass finish.



Magiglo is a leading UK manufacturer of gas fires, a position it has earned through the production of fires of the highest quality throughout the decades. Using a unique blend of innovative technologies and creative design expertise *Magiglo* is able to offer exceptional build quality and unrivalled realism.

The versatility of the *Magiglo* range means that you can mix and match almost any of the fronts and trims shown to create a personalised look which truly complements your home.

Contents

Inset Live Fuel Effect

Ekos	2 / 4 / 5
Accolade	6
Aria	7
Allusion Plus	8
Eon Plus	9
Affinity Plus	10

Decorative Gas Fire

Premos	12 / 13
Duo	14

Power Flue

Duo Power	15
Affinity Power	11

Balanced Flue

Tribute	16 / 17
---------	---------

Flueless

Empathy	18 / 19
---------	---------

Electric

Insight	20 / 21
---------	---------

Custom

Gas & Electric	22 / 23
----------------	---------

Range of Options

24 / 25

Installation Guide

26

Specifications & dimensions

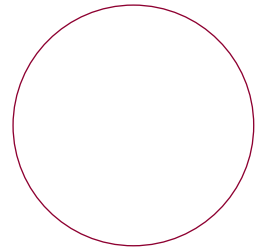
27

Fire Designer on [Magiglo website](#)

28

Magiglo constantly strives for greater efficiency, to reduce energy costs and carbon footprint. The *Magiglo* Empathy flueless is the most efficient gas fire in the world: it is 100% efficient so of course it cannot be surpassed. The Tribute is a highly efficient balanced flue fire which boasts 83% efficiency. The Inset Live Fuel Effect (ILFE) fires are around 60% efficient. The Decorative Gas Fires (DGF's), whilst still delivering effective heat, are designed primarily for cosmetic purposes.





Ekos 16" with coal fuel bed and Harmony firebox fascia in a black/brushed stainless steel finish.

Ekos 16" and 20"

The Ekos with its attractive and stylish canopy is an efficient heating appliance that boasts superb quality and unrivalled fuel bed realism. Our unique, patented burner technology produces a whisper quiet, realistic flame picture and a stunning glowing fuel-bed.

Control options Manual, Remote, Trim Switch, Total Control

Fuel Bed options Coal, Pebble, Beachcomber

Trim and Front options Any trim and front, or firebox fascia – see p24/25



Ekos 20" with pebble fuel bed, brushed stainless steel trim and Montreaux fire front in a satin finish.

Efficiency net	59%	
Fuel	NG, LPG	
Size	16"	20"
Max input, gross	6.80	11.00
Max input, net	6.12	9.90
Max output	3.64	5.57
Flue	Class 1, 2	Class 1



Beachcomber



Accolade with pebble fuel bed, brushed stainless steel profile trim and Modern fire front in a satin finish.

Accolade

The Accolade is an advanced and efficient gas fire suitable for Class 2 and Pre-cast flue types. The slim-line Accolade offers a realistic flame picture and multiple styling combinations.

Control options Manual, Remote

Fuel Bed options Coal, Pebble

Trim and Front options Any trim and front, or firebox fascia
– see p24/25

Efficiency net	61.3%
Fuel	NG only
Size	16"
Max input, gross	6.00
Max input, net	5.40
Max output	3.30
Flue	Class 2, Pre-cast





Aria with coal fuel bed, brushed stainless steel trim and Grecian fire front in a black / satin finish.



Aria with coal fuel bed, brass trim and Montreaux fire front in a black / brass finish.

Aria

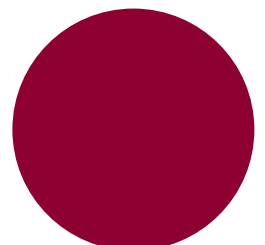
The award-winning Aria is an efficient convector appliance designed to give significant heat output. The Aria has an incredibly hot fire core and a renowned realistic flame picture. Its patented firebox design removes the need for a canopy to provide an open view of the fuel bed and enhance the radiated heat. These Aria features earned *Magiglo* the Queen's Award for Innovation.

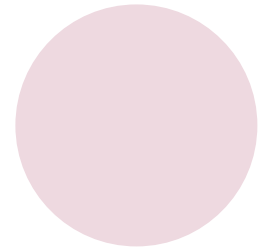
Control options Manual, Remote, Trim Switch, Total Control

Fuel Bed options Coal, Pebble

Trim and Front options The Aria has a black vented frame to which any trim and front, or Harmony fascia may be added – see p24/25

Efficiency net	55%
Fuel	NG, LPG
Size	16"
Max input, gross	6.90
Max input, net	6.21
Max output	3.41
Flue	Class 1





Allusion Plus 16" with pebble fuel bed and Dimension fascia in metallic gunmetal / silver.



Allusion Plus 20" with coal fuel bed and Dimension fascia in metallic bronze/champagne.

Allusion Plus 16" and 20"

The highly efficient Allusion Plus features a two tiered Dimension fascia in Gunmetal or bronze which adds depth to the modern look of this stunning fire. The fascia design draws your eye towards the realistic fuel bed and lively flame picture, which creates a feeling of moving art within the living space.

Control options Manual, Remote, Trim Switch, Total Control

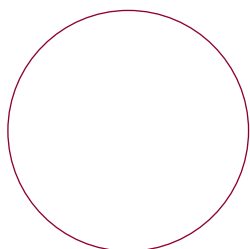
Fuel Bed options Coal, Pebble, Beachcomber

Fascia Dimension

Efficiency net	59%	
Fuel	NG, LPG	
Size	16"	20"
Max input, gross	6.80	11.00
Max input, net	6.12	9.90
Max output	3.64	5.57
Flue	Class 1, 2	Class 1



Eon Plus 16" with coal fuel bed and Piano black Quartz fascia.



Eon Plus 16" and 20"

The Eon Plus with its stunning, highly reflective Quartz piano black glass fascia is an efficient and realistic gas fire that matches looks with performance. The Quartz fascia provides the perfect contemporary setting for the magnificent glowing fuel bed. The controls can be easily accessed via the innovative gas-sprung fascia door.

Control options Manual, Remote, Trim Switch, Total Control.

Fuel Bed options Coal, Pebble, Beachcomber

Fascia Quartz



Efficiency net	59%	
Fuel	NG, LPG	
Size	16"	20"
Max input, gross	6.80	11.00
Max input, net	6.12	9.90
Max output	3.64	5.57
Flue	Class 1, 2	Class 1



Affinity Plus

16" and 20"

The Affinity Plus is a highly efficient heating appliance that creates a strong architectural presence in any room. The sleek, clean lines of its distinctive range of fascia provide the perfect surrounding for the whisper quiet and glowing fuel bed.

Control options Manual, Remote, Trim Switch, Total Control

Fuel Bed options Coal, Pebble, Beachcomber

Fascia Pure, Reveal, Form (see p24) or Aspect (smoked glass or black glass) shown below.

Vertical fascia option – see picture p11



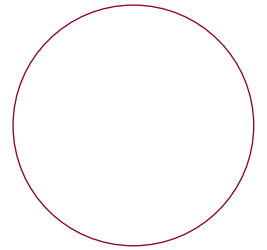
Efficiency net	59%		Pure fascia
Fuel	NG, LPG		
Size	16"	20"	
Max input, gross	6.80	11.00	
Max input, net	6.12	9.90	
Max output	3.64	5.57	
Flue	Class 1, 2	Class 1	

Affinity Plus 16" with pebble fuel bed and Aspect black glass fascia.

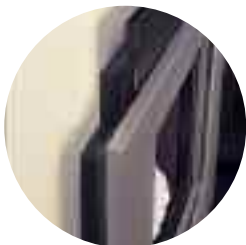




Affinity Power with a coal fuel bed and Reveal fascia.



Affinity Power with pebble fuel bed and pure fascia with contrasting vertical fascia.



Affinity Power

The Affinity Power allows you to have the style of the Affinity Plus, but without the need for a chimney or flue. The Affinity Power is a versatile appliance with numerous fascia options and flue configurations.

Control option Manual

Fuel Bed options Coal, Pebble

Fascia Pure, Reveal (see p24) or Aspect (smoked glass or black glass)
Freedom Surround and black Vertical Fascia included as standard (see p24)

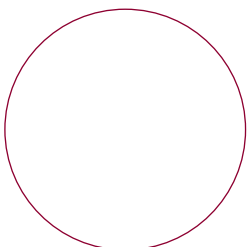
Fuel	NG, LPG
Size	16"
Max input, gross	6.90
Max input, net	6.21
Max output	3.10
Flue	Power



Premos 16" thermobox shown with a beachcomber fuel bed, brushed stainless steel trim and Wave fire front in a satin finish.

Premos 16" and 18"

The hugely successful Premos offers the natural flame picture of a real fire, a stunning glowing fuel bed, ultra quiet operation, and multiple control and styling options. The Premos is available as a radiant thermobox or as a stand alone burner tray, suitable for use with Milner backs.

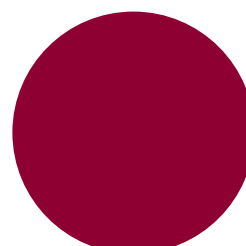


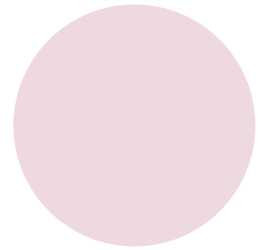


Premos 16" inset burner tray in a traditional Milner fireback with coal fuel bed, brass trim and a Montreaux fire front in a black / brass finish.

Control options Manual, Remote, Trim Switch (thermobox only), Total Control
Fuel Bed options Coal, Pebble, Beachcomber
Trim and Front options Any trim and front, or firebox fascia (thermobox only) – see p24/25

Fuel	NG, LPG	
Size	16"	18"
Max input, gross	6.80	9.00
Max input, net	6.12	8.10
Max output	2.58	3.42
Flue (thermobox)	Class 1, 2	Class 1
Flue (burner tray)	Class 1	Class 1





Duo with pebble fuel bed and Harmony firebox fascia in Gunmetal / brushed stainless steel finish.

Duo

The Duo offers fantastic realism and versatility. As well as offering a remarkable glowing fuel-bed and extensive styling options, the Duo can be installed in a Class 1, Class 2 or the deeper type of pre-cast flue system.

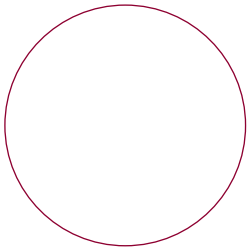
Control options Manual, Remote, Trim Switch, Total Control

Fuel Bed options Coal, Pebble

Trim and Front options Any trim and front, or firebox fascia – see p24/25

Fuel	NG, LPG
Size	16"
Max input, gross	6.90
Max input, net	6.21
Max output	3.10
Flue	Class 1, 2, Precast





Duo Power

The fan-flued Duo Power, with side or rear vent flue option, offers the same realism as the Duo without the need for a chimney.

Control options Manual, Trim Switch

Fuel Bed options Coal, Pebble

Trim and Front options Any trim and front, or firebox fascia
– see p24/25

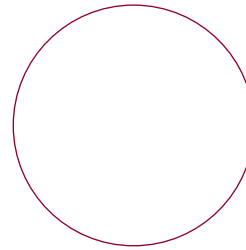
Freedom surround – see p24

Terminal vent – see p26

Fuel	NG, LPG
Size	16"
Max input, gross	6.90
Max input, net	6.21
Max output	3.10
Flue	Power

Duo Power with pebble fuel bed, Grecian fire front in a black / satin finish and a brushed stainless steel profile trim.





Tribute with coal fuel bed, brass trim and a Grecian firefront in a black / brass finish.

Tribute balanced flue

New to the range, the Tribute balanced flue fire is glass fronted, completely room sealed and vents directly to an outside wall, which results in a remarkable efficiency. The Tribute offers a magnificent fuel bed and extensive styling options.

Control options Manual, Remote, Total Control

Fuel Bed Coal

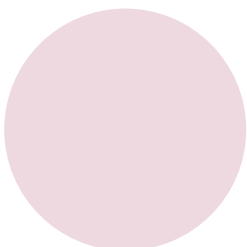
Trim and Front options Any trim and front, or Harmony fascia

– see p24/25



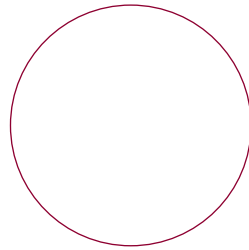
Terminal vent

Efficiency net	83%
Fuel	NG
Size	16"
Max input, gross	5.10
Max input, net	4.59
Max output	3.81
Flue	Balanced





Tribute with coal fuel bed and Harmony firebox fascia in a black / brushed stainless steel finish.



Empathy flueless

The 100% efficient Empathy is a catalytic flueless gas fire which is designed to operate without a flue. This means that all the gas is used to heat your room and none is lost up the chimney. The Empathy can be installed on any wall, with or without a fireplace opening, in almost any room with a minimum room size of 30m³. A number of styling options are offered with the impressive pebble or coal fuel bed. A cavity wall box is included and we recommend that it is used in all cases.

Control option Manual, Remote

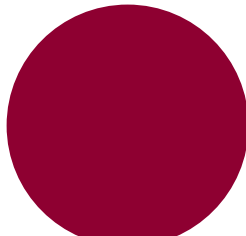
Fuel Bed options Coal, Pebble

Trim and Front options Any trim and front, or firebox fascia (see p24/25). Optional spacer allows the Empathy to completely freestand.



Empathy with brushed stainless steel profile trim and Montreaux fire front with a black / satin finish.

Efficiency net	100%
Fuel	NG, LPG
Size	16"
Input / Output	2.5
Flue	Flueless





Insight electric

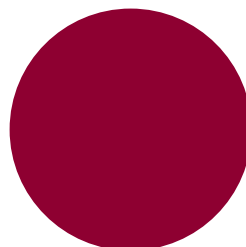
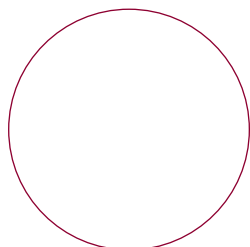
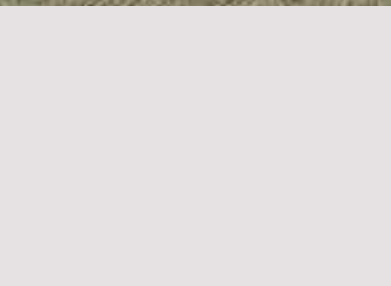
The Insight, with corresponding wide choice of styling options and coal fuel-bed, offers an exciting electric supplement to the established *Magiglo* range. Simply switch on for instant heat and effect or, in warmer weather, enjoy the homeliness of realistic flames without using heat. The 2kW fan heater is thermostatically controlled and 100% efficient at point of use.

Control option Remote with manual override

Fuel Bed Coal

Trim and Front options Any trim and front, or Harmony fascia – see p24/25

Positioning Freestanding, inset or semi-inset



Insight with Harmony
firebox fascia in a
gunmetal / stainless steel
finish.



Custom gas fire

Custom fires bespoke

Did you know that *Magiglo* can manufacture bespoke gas or electric fires to the exact dimensions of your fireplace? Whether it is a tiny inset Victorian casting, a huge baronial log basket or a hand built hole-in-the-wall fire, simply contact your nearest authorised dealership and ask to see the *Magiglo* custom order sheet. This offers a wide selection of options to make the perfect fire for you.





The build quality of your Custom **gas** fire will be second to none. The burner tray is fabricated and cut by hand to the exact size by skilled craftsmen. As every fire is unique, no automated processes can be used. Once fabricated it is hand sprayed in a special paint which can withstand the high temperatures it will encounter during its life. The burner board is hand cut to fit the tray perfectly and drilled precisely to give your fire the most realistic flame possible.



Before

If you choose a Custom **electric** fire, the tray is fabricated and sprayed in the manner described for the gas fire. The optimum number of lamps are chosen as dictated by space. If there is sufficient room each will have a spinner to give a pleasant flickering effect. The coal bed is then hand cut and moulded to suit. During assembly a switch is fitted in line with the cable so easy access is ensured. A coal or pebble effect fuel bed is then selected and finally the finished fire is tested to European standards.



After

Custom electric fire



Fuel Beds

Choice of exceptional realistic fuel beds.



Coal



Pebble

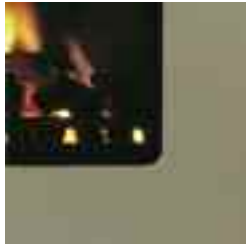


Beachcomber

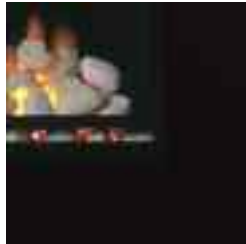
Affinity, Pure and Form fascia

To complement room decor, select the fascia from the range of colours shown.

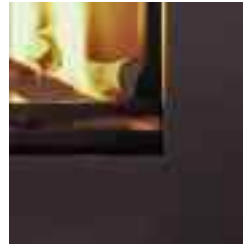
A number of different styles are available for the Affinity.



Astatine



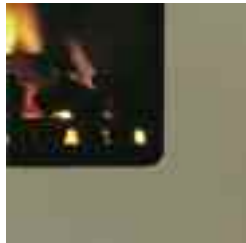
Black



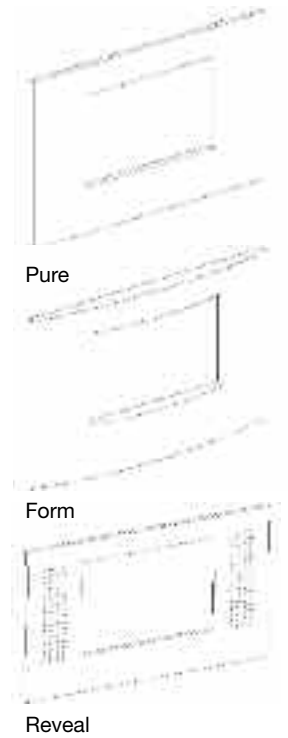
Gunmetal



Quicksilver



Taupe



Pure

Form

Reveal

Firebox fascia

Some *Magiglo* fires are suitable for use with a 3-sided or 4-sided firebox fascia.

The harmony and ioss fascia shown here can completely transform a standard sized fire.



Harmony fascia
Bronze / brushed brass.
16" and 20"



Harmony fascia
Black / brushed brass.
16" and 20"



3-sided ioss
Black or stainless steel
16"



Harmony fascia
Black / brushed stainless steel.
16" and 20"



Harmony fascia
Gunmetal / brushed stainless steel.
16" and 20"



4-sided ioss
Black or stainless steel
16"

Freedom surround

The Freedom surround is an optional extra that creates an air pocket to increase efficiency and reduce heat transfer to the surrounding wall.

It is supplied as standard with the Affinity Power.



Freedom surround

Fire fronts

Select a fire front to suit the style of your fireplace and room. These fire fronts are available in a variety of finishes and to suit various fire sizes.

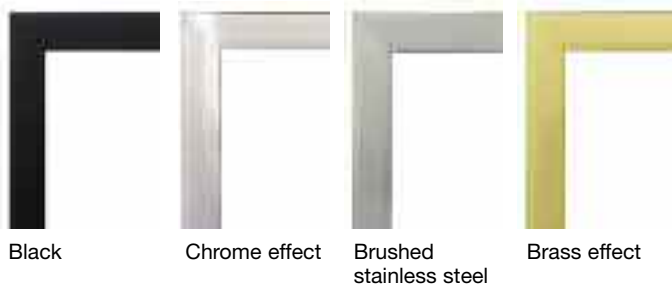
- a – all black
- b – black with brass knob
- c – black / polished
- d – satin
- e – chrome
- f – brass
- g – black / brass
- h – black / satin



Trim finishes

Most floor mounted fires require a trim to complete the fireplace. Choose from the standard width trim (46mm) or the profile trim (32mm). Both are available in a variety of finishes. To produce a two-tone trim, a profile trim can fit onto a standard trim.

Standard



Profile



Installation guide and general information

Installation

Magiglo recommends that installation of its gas products is only carried out by installers employed or recommended by a Magiglo authorised retailer. Gas installations must be carried out by a Gas Safe Register installer.

Please note – this guide is a summary. Full installation and user instructions are contained in booklets supplied with the fire and on our website – www.magiglo.co.uk

Please read installation instructions before undertaking any structural preparation work.

Ventilation

Generally, a gas fire with a gas input of 6.9kW or less does not normally require additional ventilation. A fire with a gas input of 7.0kW or more will require the installation of additional ventilation. Flueless gas fires require an air vent.

Safety

All Magiglo gas fires feature an oxygen depletion sensor that monitors the air supply in the room and automatically shuts off the fire before the oxygen supply can fall below a safe level.

Natural gas or Propane

With the exception of the Tribute balanced flue fire, all gas models are available in natural gas or propane. Due to the properties of propane the flame picture may differ slightly.

Warranty

All Magiglo fires carry a 12 month guarantee.

Control options

Manual control

The manual control incorporates an integral ignition. Any flame height between high and low may be selected.

Trim switch control

The trim switch allows you to operate the appliance from a high level switch located on the side of the fire. Manual ignition is required.

Remote control

A remote handset is used to operate the fire. Manual ignition is required. The fire can also be operated manually.

Total control

This option provides total control of your appliance by igniting the pilot and operating the fire by remote control. The fire can also be operated manually.



Manual control valve



Trim switch



Remote control valve



Total control

Terminal vents for Duo and Affinity Power Flues

The flue for a rear vented fire extends from the rear of the appliance directly through a wall to outside air, using up to 760mm of flue duct (with optional extension).

The flue for a side vented fire can be routed up to 7 metres horizontally to outside air.

The unique design of Magiglo terminal vents include an internal baffle, designed to reduce nuisance fan shut-downs in adverse weather conditions and reduce back draught to the room.



Side vent terminal



Surface-mounted rear vent terminal



Recessed rear vent terminal (for use if external space is restricted)

Model	Size in inches	Category	NG Input / Output			LPG Input		Control			Vent		Flue				Fuel Bed				Styling			Approximate Trim Size*		Inset			
			Max Input kW gross	Min Input kW gross	Max Output	Max Input kW gross	Min Input kW gross	Manual	Remote	Trim Switch	Total	No Vent Option	Class 1	Class 2	Pre-cast	Balanced	Power	No fireplace	Coal	Pebble	Beachcomber	Shoreline	Front	Trim	Fascia	Height	Width	Width at Front	Width at Back
Ekos	16	I	6.80	3.50	3.64	6.80	3.50	●	●	●	●	●	●	●	●	●	●	●	●	●	●	●	●	●	580	485	397	313	255
Ekos	20	I	11.00	5.00	5.57	10.00	5.00	●	●	●	●	●	●	●	●	●	●	●	●	●	●	●	●	580	585	493	412	256	
Accolade	16	I	6.00	2.60	3.30	n/a		●	●	●	●	●	●	●	●	●	●	●	●	●	●	●	●	580	485	355	242	105	
Aria	16	I	6.90	3.00	3.41	6.90	3.00	●	●	●	●	●	●	●	●	●	●	●	●	●	●	●	●	585	490	385	260	248	
Allusion Plus	16	I	6.80	3.50	3.64	6.80	3.50	●	●	●	●	●	●	●	●	●	●	●	●	●	●	●	●	624	814	397	313	255	
Allusion Plus	20	I	11.00	5.00	5.57	10.00	5.00	●	●	●	●	●	●	●	●	●	●	●	●	●	●	●	●	624	814	493	412	256	
Eon Plus	16	I	6.80	3.50	3.64	6.80	3.50	●	●	●	●	●	●	●	●	●	●	●	●	●	●	●	●	684	1066	397	313	255	
Eon Plus	20	I	11.00	5.00	5.57	10.00	5.00	●	●	●	●	●	●	●	●	●	●	●	●	●	●	●	●	684	1066	493	412	256	
Affinity Plus	16	I	6.80	3.50	3.64	6.80	3.50	●	●	●	●	●	●	●	●	●	●	●	●	●	●	●	●	624	916	397	313	255	
Affinity Plus	20	I	11.00	5.00	5.57	10.00	5.00	●	●	●	●	●	●	●	●	●	●	●	●	●	●	●	●	624	916	493	412	256	
Affinity Power	16	P	6.90	4.00	3.10	6.50	3.00	●	●	●	●	●	●	●	●	●	●	●	●	●	●	●	●	624	916	397	313	255	
Premos Tray	16	D	6.80	3.50	2.58	6.80	3.50	●	●	●	●	●	●	●	●	●	●	●	●	●	●	●	●	n/a	n/a	390	240	210	
Premos Tray	18	D	9.00	4.00	3.42	8.50	4.00	●	●	●	●	●	●	●	●	●	●	●	●	●	●	●	●	n/a	n/a	445	290	210	
Premos Thermobox	16	D	6.80	3.50	2.72	6.80	3.50	●	●	●	●	●	●	●	●	●	●	●	●	●	●	●	●	580	485	400	400	253	
Premos Thermobox	18	D	9.00	4.00	3.60	8.50	4.00	●	●	●	●	●	●	●	●	●	●	●	●	●	●	●	●	580	535	450	450	253	
Duo	16	D	6.90	4.00	3.10	6.50	3.00	●	●	●	●	●	●	●	●	●	●	●	●	●	●	●	●	580	485	400	242	180	
Duo Power RV	16	P	6.90	4.00	3.10	6.50	3.00	●	●	●	●	●	●	●	●	●	●	●	●	●	●	●	●	580	485	400	242	180	
Duo Power SV	16	P	6.90	4.00	3.10	6.50	3.00	●	○	●	●	●	●	●	●	●	●	●	●	●	●	●	●	580	485	400	242	180	
Tribute	16	B	5.10	2.40	3.81	n/a		●	●	●	●	●	●	●	●	●	●	●	●	●	●	●	●	605	497	400	400	180	
Empathy	16	F	2.50	2.50	2.50	2.50	2.50	●	●	●	●	●	●	●	●	●	●	●	●	●	●	●	●	609	501	387	270	100	
Custom Gas	varies	D	varies	varies		varies		●	●	●	varies							●	●	●	●	●	n/a	n/a	varies				
Insight	16	E	2.00	2.00	2.00			●	●	●	●	●	●	●	●	●	●	●	●	●	●	●	●	610	520	385	290	95	
Custom Electric	varies	E	flame effect only					●										●	●	●	●	●	n/a	n/a	varies				

* Different cosmetic style trims vary in size. Measurements are approximate for guidance.

● This option is available on Natural Gas models only.

Output figures quoted are calculated under ideal test laboratory conditions. All details are for information purposes only and we reserve the right to modify any specifications without notice.

○ Available except where using side vent with a Freedom surround.

- I Inset Live Fuel Effect
- D Decorative Gas Fire
- B Balanced Flue
- P Power Flue
- F Fuelless
- E Electric



Smart phone scanner

Create your own perfect fire

Visit Magiglo's Fire Designer

at

magiglo.co.uk

Choose from Magiglo's 260,000 model combinations to design your own unique fire.

Once you have selected the fire of your choice, simply print the page with its full product specification and hand it to your local Magiglo stockist.



Burley Appliances Ltd

Lands End Way
Oakham
Rutland LE15 6RB
United Kingdom

For more information or details of your nearest stockist:

Telephone
+44 (0)1572 725570
Fax +44 (0)1572 724390
email: magiglo@burley.co.uk
www.magiglo.co.uk

Images remain copyright of Burley Appliances Ltd and may not be reproduced without the permission of Burley's Marketing Department.

Because our policy is one of constant development, details may vary from those given in this publication.



Made in England



Telephone
01572 725570

Home | About Magiglo | Fires | Fire Designer | Custom Fires | Stockists | FAQs | Contact us

Magiglo Fireplace Designer Use the options below to create your perfect fire and a full product specification report

Choose Your Fuel Type

Electric Nat. Gas LPG

Choose Your Fireplace Type

Hearth Hole in the wall

Step 1 - Flue [more info](#)

Class 1 Flue

Step 2 - Fireplace Width [more info](#)

16" (40.6CM)

Step 3 - Fuel Bed style [more info](#)

Coal

Step 4 - Model options

Ekos

Choose Your front style

Fascia Fronts and Trim

Trim Width

Standard and Profile

Standard Trim style

Black

Profile Trim style

Brass effect

Fire Front style

Montreaux

Fire Front finish

Black with Brass

Control

Manual

Light my Fire



Ekos 16"

[Print this page](#) to show to a Magiglo stockist [Click here for stockists in your area](#)

Inset Live Fuel Effect

Power	Natural Gas
Flue	Class 1 Flue
Fuel Bed	Coal
Control	Manual Control
Trim and Front	Brass effect profile trim, black standard trim, Montreaux black with brass fire front
Vent required	No

Power details

Natural gas	Input / Output
Max Input (kW gross)	6.8
Min Input (kW gross)	3.5
Max Output (kW gross)	3.64

Fire Dimensions (mm)

Approximate trim size	
Height	580
Width	485
Inset	
Height	555
Width at Front	397